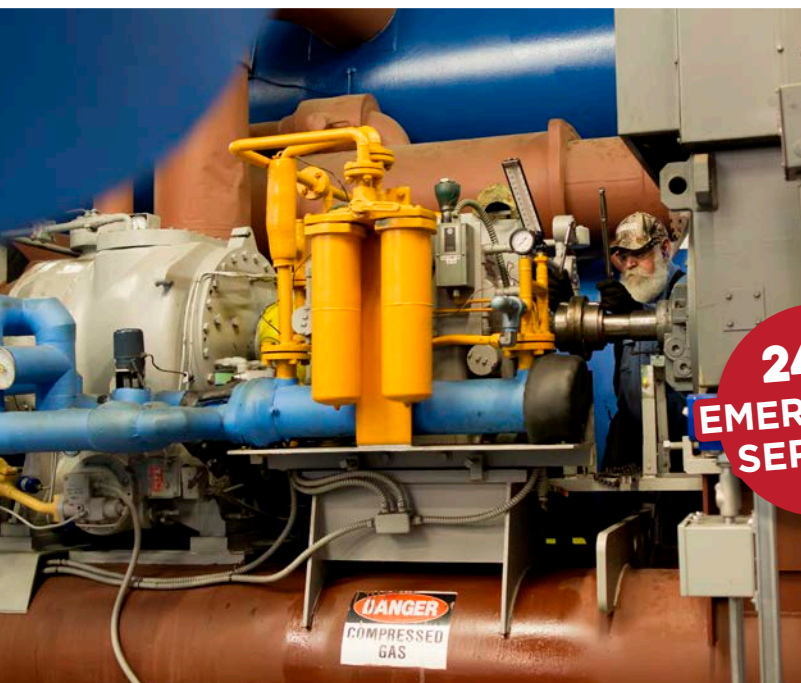


FIELD SERVICE CAPABILITIES

ISO 9001
CERTIFIED



We continue to expand our electrical and mechanical field service capabilities to stay current with the needs of our industry. We use only the latest and best diagnostic equipment, hire the most experienced personnel and provide continued training in order to meet the stringent requirements of our customers. We're always on call to service our customer's needs whether it's routine maintenance, unscheduled equipment emergencies, or assisting with your preventative or predictive maintenance programs.

INDIANAPOLIS

877.467.6372

TERRE HAUTE, IN

800.288.5281

FORT WAYNE, IN

260.434.1189

LOUISVILLE, KY

502.583.7097

SPRINGFIELD, OH

800.727.0549

CINCINNATI, OH

800.288.9822

24/7
EMERGENCY
SERVICE

 **HORNER**
INDUSTRIAL GROUP

HORNERINDUSTRIAL.COM

FIELD SERVICE CAPABILITIES

MECHANICAL SERVICES:

- EQUIPMENT REMOVAL AND INSTALLATION
- OUTAGE STAFFING TO ENHANCE YOUR MAINTENANCE DEPARTMENT
- MOTOR AND GENERATOR REPAIR
- ON-SITE REWINDING
- ONSITE FAN & BLOWER BALANCING
- LASER SHAFT ALIGNMENT
- MACHINE/MOTOR PM SERVICES, BEARING MAINTENANCE & REPLACEMENT
- CRYOGENIC (DRY ICE) CLEANING
- SOLVENT CLEANING
- MOTOR BRUSH INSPECTIONS, SERVICE, & REPLACEMENT
- ULTRASONIC LUBRICATION SERVICES
- HYDRAULIC SYSTEM MAINTENANCE
- COMMUTATOR AND SLIP RING MACHINING
- COMMUTATOR TESTING
- POLYMER SHAFT AND HOUSING REPAIRS
- WELDING
- BASE INSTALL AND GROUTING
- GEAR REDUCERS, PUMPS, AND COOLING TOWERS
- COUPLING REPLACEMENT
- DYNAMIC BALANCING
- PUMP REMOVAL, INSTALLATION, AND REPAIR

ELECTRICAL SERVICES:

- POWER AND CONTROL WIRING
- INSTALLATION REPAIR, MAINTENANCE, OF ELECTRICAL DISTRIBUTION EQUIPMENT
- MACHINE POWER INSTALLATIONS, RELOCATION, UPGRADES, REPAIR, AND MAINTENANCE
- SWITCHGEAR, MOTOR CONTROL, AND TRANSFORMER INSTALLATION, TESTING, REPAIR, AND MAINTENANCE
- MEDIUM VOLTAGE CABLE INSTALLATION, SPLICING AND TERMINATIONS
- POWER QUALITY MONITORING AND TESTING
- VARIABLE FREQUENCY DRIVES SERVICE & INSTALLATION
- ELECTRONIC EQUIPMENT INSPECTIONS AND SERVICE

FAN AND FABRICATION SERVICES:

- HVAC FANS AND PROPELLERS
- INDUSTRIAL BLOWER REBUILDS
- COMMERCIAL AIR HANDLERS AND COOLING TOWERS
- CENTRIFUGAL FANS
- VENTILATION AND EXHAUST SYSTEMS
- DUST AND MATERIAL COLLECTION SYSTEMS
- HAND RAILS AND STAIRS
- BELT AND EQUIPMENT GUARDING
- BEARING MAINTENANCE AND REPLACEMENT
- FABRICATED PARTS INSTALLATION
- DYNAMIC BALANCING

AUTOMATION AND CONTROLS:

- TROUBLESHOOTING OF MACHINE CONTROLS
- PLC PROGRAMMING AND UPGRADES
- AC VARIABLE FREQUENCY OR DC DRIVES, SOFT STARTERS, INSTALLATION, DRIVE SYSTEM EVALUATION
- SYNCHRONOUS, WOUND ROTOR, INDUCTION, AND DC MOTOR CONTROL REPAIR

PREDICTIVE MAINTENANCE:

- ELECTRICAL MOTOR AND CIRCUIT TESTING (PDMA, ABB L.E.A.P. TESTING)
- OIL SAMPLING AND TESTING
- THERMOGRAPHY (IR) - ELECTRICAL, MECHANICAL, AND HYDRAULIC
- ELECTRICAL INSPECTIONS
- GROUNDING AND BONDING INSPECTIONS
- TRANSFORMER TESTING AND OIL SAMPLING
- ULTRASONIC LEAK DETECTION
- VIBRATION ROUTES AND REPORTING
- MONTHLY AND QUARTERLY INSPECTIONS

EMDS ADVANCED VIBRATION ANALYSIS:

For advanced diagnostics services, we recommend our EMDS department. Offering over 100 years of combined experience, our analysts are among the most highly trained professionals in the world. Each analyst is Level IV or Level III certified to ISO standards by the Vibration Institute which is ANSI accredited. Our analysts are experts at developing and executing vibration analysis programs, we apply cutting-edge technology and complete commitment to:

- IDENTIFY PROBLEMS BEFORE THE PROCESS IS SHUT DOWN
- PREVENT SECONDARY EQUIPMENT DAMAGE
- DECREASE COSTLY DOWNTIME

CALL US!

877.467.6372

**24/7
EMERGENCY
SERVICE**



LOCTITE
Certified
Applicator

HORNER
INDUSTRIAL GROUP

HORNERINDUSTRIAL.COM